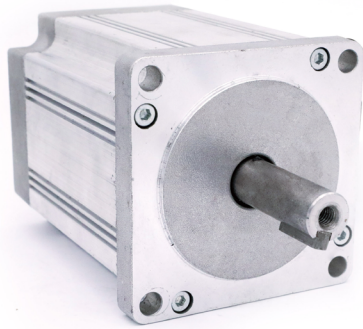


# 80BL

## BRUSHLESS DC MOTOR



### General Specifications

Winding Type	Star
Hall effect angle	120° Electrical angle
Insulation Class	B
Ambient Temperature	-20°C~+50°C
Insulation Resistance	100MΩ Min.500VC DC
Dielectric Strength	600VAC 1 minute
Max Radial Force	220N (10mm from front flange)
Max Axial Force	60N

### Technical Specifications

Model	No. of Poles	No. of Phase	Rated Voltage (VDC)	Rated Torque (N.m)	Rated Speed (RPM)	Rated Current (Amps)	Output Power (Watts)	Peak Torque (N.m)	Peak Current (Amps)	Torque Constant (N.m/Amps)	Back EMF Constant (V/kRPM)	Motor Height L (mm)	Motor Weight (kg)
80BL01A	4	3	48	0.7	3000	6.36	220	2.1	19.0	0.11	12	105.0	2.19
80BL02A			48	1.2	3000	11.0	376	3.6	33.0	0.11	12	132.5	2.80
80BL03A			310	1.8	3000	2.43	565	5.4	7.3	0.74	77.5	160.0	3.50

\* Products can be customized by special request.

### Wiring Diagram

FUNCTION/功能	COLOR/颜色		
+5V	RED	红	UL1007 26AWG
HALL A	YELLOW	黄	
HALL B	GREEN	绿	
HALL C	BLUE	蓝	
GND	BLACK	黑	AF0.75
PHASE A	YELLOW	黄	
PHASE B	GREEN	绿	
PHASE C	BLUE	蓝	

### Mechanical Dimension

